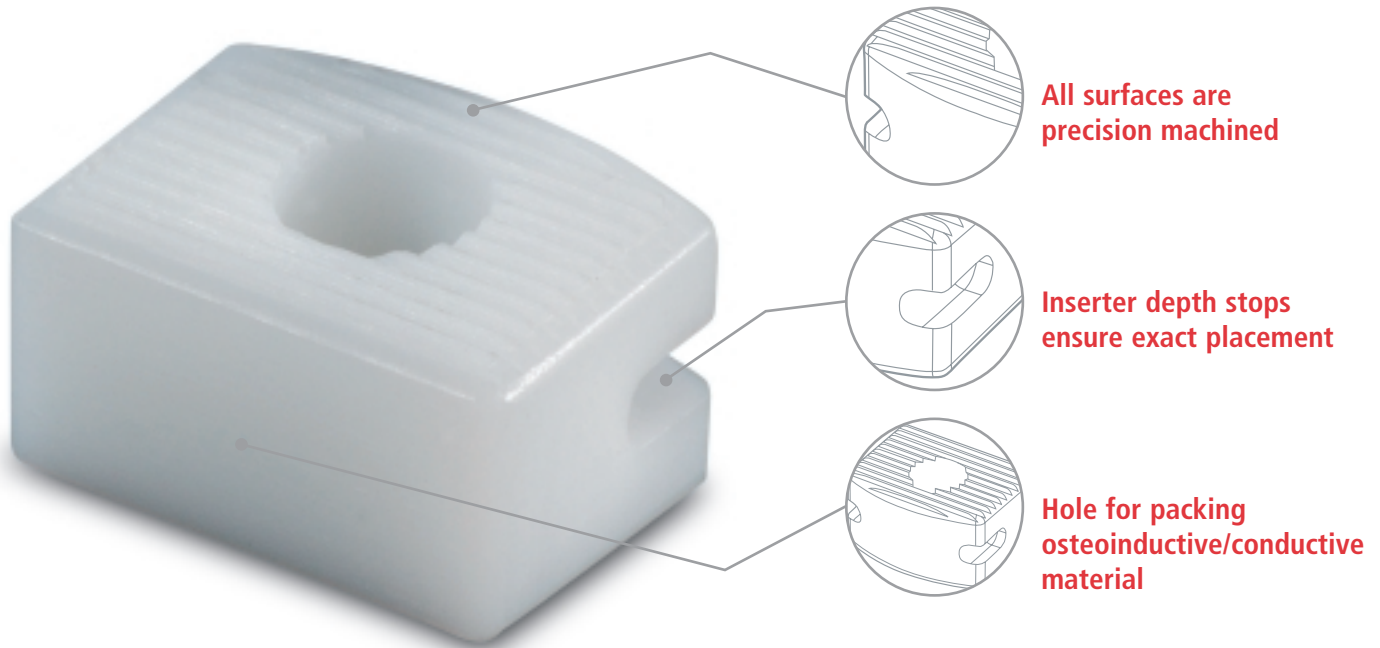


:: AlloQuent™ Cervical Allograft ::

100% Cortical Bone Cervical Allograft



The Blackstone Difference: Unmistakable Accuracy

By precision machining all the surfaces of the AlloQuent cervical allograft, surgeons can be sure that the dimensions of the insert they select exactly matches the dimensions they require. Precision machining also enables the upper and lower surfaces to contain ribs to help prevent backout during insertion. It also incorporates a hole for osteoinductive/conductive material without significantly weakening the implant.

- precision machined for exact dimensions
- anti-backout ribs
- hole for osteoinductive/conductive material

Putting Surgeons First: Stable Insertion

Blackstone has made the allograft insertion process simpler and accurate in several ways. First, the inserter grips the allograft rather than utilizing a "tack-on" approach, ensuring its integrity is maintained. Secondly, the inserter can double as an impactor should the surgeon so choose: its depth stops provide exact placement even when visualization is limited.

- inserter grips allograft
- inserter depth stops ensure exact placement

Though allograft is common to many cervical procedures, there is nothing common about the advanced details that are engineered into AlloQuent. Through detailed consideration of the factors that affect surgeons' ability to do their best, Blackstone has created a system that removes the variables that can slow the process down.